



# Welcome to the RDA Information Session

## Understanding And Engaging With RDA Groups

**Hilary Hanahoe, RDA Secretary General**  
**Stefanie Kethers, RDA Director of Operations**



I would like to begin by acknowledging the Traditional Owners of the lands on which we all live and work. I pay my respects to their Elders, past, present, and emerging.



# Agenda 31 August 2021, 07:30 UTC

1. Welcome and housekeeping - Stefanie Kethers
2. Welcome to RDA and RDA Governance - Hilary Hanahoe
3. How RDA works - Stefanie Kethers
  - Working and Interest Groups and Communities of Practice
  - Outputs, Recommendations and Adoption
4. Outlook to the next RDA Virtual Plenary - Hilary Hanahoe
5. Q&A

*Mute during presentations*



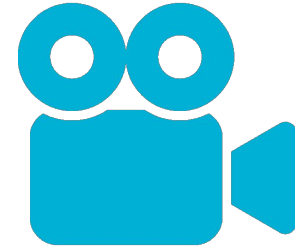
*unmute if you'd like to talk*

*For questions & comments*



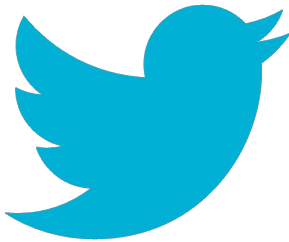
*use the Chat box  
or raise your hand*

*Turn on your video*

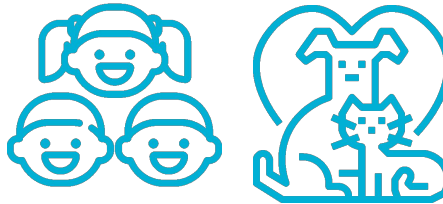


*if you feel comfortable  
and have the bandwidth*

*#RDAPlenary*



*We welcome little people*



*& pets*

*Come prepared to contribute*



*and have fun!*



# The Research Data Alliance: What it does and how it is governed

Hilary Hanahoe

Secretary General, Research Data Alliance (RDA)



## Vision

Researchers and innovators openly **share** and **re-use** data across **technologies, disciplines, and countries** to address the grand challenges of society.

## Mission

RDA builds the **social** and **technical** bridges that enable open sharing and re-use of data.

## THE RESEARCH DATA ALLIANCE

[www.rd-alliance.org](http://www.rd-alliance.org)

*building the social and technical bridges that enable open sharing and re-use of data*

### 50 FLAGSHIP OUTPUTS

including 8 ICT Technical Specifications (standards)

### 140+ ADOPTION CASES

across multiple disciplines, organisations & countries

### 92 GROUPS WORKING ON GLOBAL DATA CHALLENGES

36 Working Groups

55 Interest Groups

1 Community of Practice

### 12,000+ INDIVIDUAL MEMBERS FROM 146 COUNTRIES

69% Academia & Research

14% Public Administration

11% Enterprise & Industry

52 ORGANISATIONAL MEMBERS

12 AFFILIATE MEMBERS





RESEARCH DATA ALLIANCE

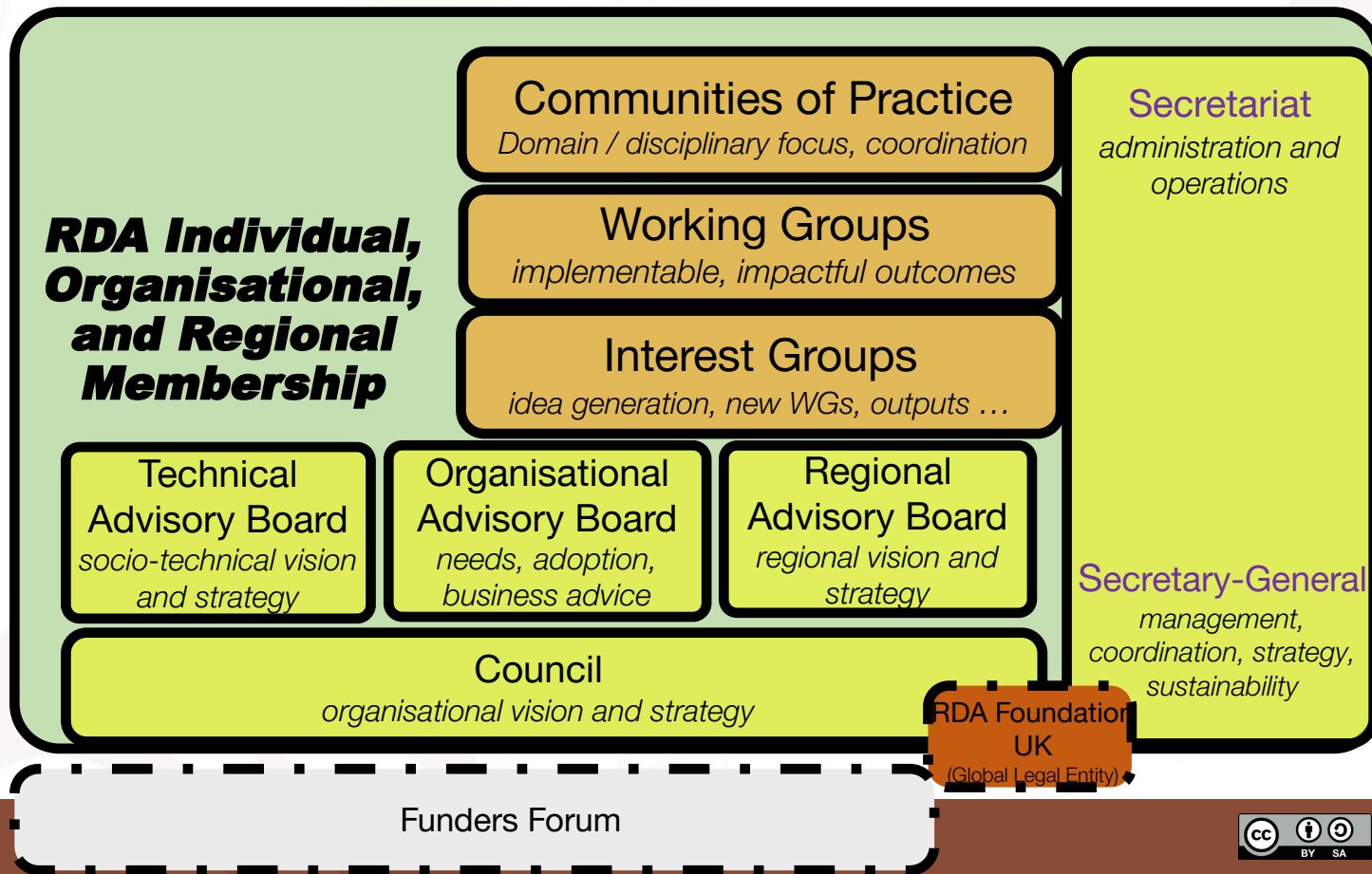
## GUIDING PRINCIPLES

- **OPENNESS** – RDA community meetings and processes are open, and the deliverables of RDA Working Groups will be publicly disseminated.
- **CONSENSUS** – The RDA moves forward by achieving consensus among its membership. RDA processes and procedures include appropriate mechanisms to resolve conflicts.
- **INCLUSIVE** – The RDA seeks to ensure broad, balanced and inclusive representation of its membership and stakeholder communities.
- **HARMONIZATION** – The RDA works to achieve harmonization across data standards, policies, technologies, infrastructure, and communities.
- **COMMUNITY-DRIVEN** – The RDA is a public, community-driven body constituted of volunteer members and organisations, supported by the RDA Secretariat.
- **NON-PROFIT AND TECHNOLOGY-NEUTRAL** - The RDA does not promote, endorse, or sell commercial products, technologies, or services and the development of open and re-usable recommendations and outputs within the RDA is mandatory.





# RDA Global Governance







# How the Research Data Alliance Works

Working and Interest Groups  
and Communities of Practice



# The Heart of RDA...

**... are the RDA Working and Interest Groups  
and Communities of Practice**



# How Do RDA WGs, IGs and CoPs work?

- A number of people from different backgrounds, regions, etc. coming together to work on a specific topic
- A number of Co-chairs (usually 2-4) from different regions facilitate the group
- Regular virtual meetings / teleconferences
- Meetings at Plenaries
  - Working meetings
  - Joint sessions with other groups



# The Heart of RDA ...

<b>Working Groups (WGs)</b>	<b>Interest Groups (IGs)</b>	<b>Communities of Practice (CoPs)</b>
<p>Develop and implement tools, policy, practices &amp; products for data management that are adopted and used by projects, organisations, communities.</p>	<p>Focus on solving a specific data sharing problem and identifying what kind of infrastructure needs to be built.</p>	<p>Investigate, discuss and provide knowledge and skills within a specific discipline and / or research domain. Coordination and awareness raising role, “umbrella group”.</p>
<p>Duration: 12-18 months</p>	<p>Duration: ongoing while IG is active</p>	<p>Duration: ongoing, but reviewed every 18 months</p>
<p>Outputs: Recommendations - concrete deliverables e.g. “Running code”, tools, standards, etc.</p>	<p>Outputs: Possibly case statements for new WGs, Supporting Outputs, e.g. guidelines, best practice, reports, etc.</p>	<p>Outputs: New WGs &amp; IGs, bridge building across RDA and externally.</p>



# Finding RDA Groups



## RDA for you - search your groups

Home » Groups » Creating and Managing RDA Groups » RDA for you - search your groups

The Research Data Alliance accomplishes its mission primarily through **Working Groups and Interest Groups**.

In order to allow new members to understand what technical and social infrastructure solutions RDA groups are developing, and which scientific disciplines may benefit of RDA Group outcomes, this filter has been created to allow you identify which RDA group(s) might be more useful for your research.

Groups can be selected according to their **focus** [1], that is: what problem they try to solve, and/or according to the **scientific domains** [2] in which their communities operate.

Select the desired fields from the boxes on the right and identify RDA groups for your; then you only need to join them!

**NB: This page only shows the current RDA Working and Interest Groups that have been tagged with "Main focus" and "Domain / field of expertise". You can find a complete list of the current RDA Working and Interest Group [here](#).**



**Main Focus**

Select All

- Data Management
- Data Collection
- Data Description
- Identity, Store, and Preserve
- Disseminate, Link, and Find
- Policy, Legal Compliance, and Capacity
- Not applicable

**Domain/Field of Expertise**

- Social Sciences
- Natural Sciences
- Engineering and Technology
- Medical and Health Sciences
- Agricultural Sciences
- Humanities

**Domain Agnostic**

- Domain Agnostic

- |   |  |
|---|--|
| <b>WG</b> Discipline-specific Guidance for Data Management Plans WG   | <b>WG</b> FAIRsharing Registry: connecting data policies, standards and databases RDA WG |
| <b>WG</b> Metadata Standards Catalog WG   | <b>WG</b> Preserving Scientific Annotation WG  |
| <b>WG</b> RDA-COVID19-Software  | <b>WG</b> RDA/FORCE11 Software Source Code Identification WG                             |
| <b>WG</b> Working Group on Ethical and Legal best practices for Drone Data in a global research context (WELDD) |  |
| <b>IG</b> Metadata IG   | <b>IG</b> RDA/CODATA Materials Data, Infrastructure & Interoperability IG                |
| <b>IG</b> Research Data Management in Engineering IG  | <b>IG</b> Sensitive Data Interest Group  |
| <b>IG</b> Virtual Research Environment IG (VRE-IG)  |  |

[1] Some other teams have undertaken similar activities, such as the view available at [https://suave-dev.sdsc.edu/main/file=zaslavsk\\_RDA\\_Groups\\_June\\_2018.csv&views=1110001&view=bucket](https://suave-dev.sdsc.edu/main/file=zaslavsk_RDA_Groups_June_2018.csv&views=1110001&view=bucket)  
[2] "Fields of R&D classification" as indicated in the Frascati Manual 2015: Guidelines for Collecting and Reporting Data on Research and Experimental Development. Published by the OECD



# Colour Coding Legend

## Interest Groups (IGs) / CoPs

- ⊕ Not yet endorsed
- ✓ IG Established

## Working Groups (WGs)

- ⊕ Not yet endorsed
- ✓ WG Getting started (approx. 0-6 months after endorsement)
- ⦿ WG Producing deliverables (approx. 6-12 months after endorsement)
- WG Wrapping up (from approx. 12 months after endorsement)
- 🔄 WG Maintaining deliverables (maintenance group)

Home » Working and Interest Groups » Working Group » CURE-FAIR WG

**WG** **CURE-FAIR WG**  
Taxonomy:

Posts Wiki Events Repository Outputs Case Statements Plenaries Members

Group Status: ⦿ WGs Producing deliverables (-6-12 months after RDA endorsement)



# How the Research Data Alliance works

Outputs and Recommendations



# Types of RDA Outputs

- Recommendations
  - Produced by RDA Working Groups
  - Formal endorsement process
  - Official, endorsed results of RDA
  - Need to be adoptable and adopted
- Supporting Outputs
  - Produced by RDA Working or Interest Groups
  - Undergo community review
  - Useful solutions, but don't have to show adoption
- Other Outputs
  - Resources requested by an RDA Working or Interest Group or CoP to be published on the RDA website
  - No level of endorsement





# A Closer Look at RDA Recommendations

- “Flagship outputs” - official, endorsed results of RDA
- Every WG should develop at least one
- May include specifications, taxonomies or ontologies, workflows, schemas, data models, etc.
- Comparable to other organisations’ “specifications” or “standards”
- Have RDA DOI minted
- After endorsement: published in [Research Data Alliance](#) collection in Zenodo



# A Closer Look at RDA (Supporting) Outputs

- Supporting Outputs
  - Useful solutions from RDA WGs and IGs
  - May not be as clearly adoptable by organisations as RDA Recommendations
  - Have RDA DOI minted
  - After successful community review: published in [Research Data Alliance](#) collection in Zenodo
- Other Outputs
  - No reviewer endorsement
  - May be published in [Research Data Alliance - Related Documents](#) collection in Zenodo



# Outputs Catalogue

## Outputs & Recommendations

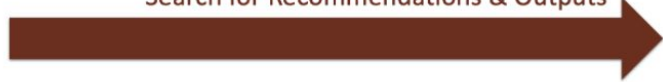
Home » Recommendations & Outputs » Outputs & Recommendations

RDA Outputs are the technical and social infrastructure solutions developed by RDA Working Groups or Interest Groups that enable data sharing, exchange, and interoperability.

These Outputs have an important impact in two areas: solving problems, and incorporation and/or adoption in infrastructure environments by individuals, projects and organisations. As an organisation, RDA's goal is to expand awareness and adoption of these Outputs, and hence their impact, within all regions of the world. RDA Outputs are products of the respective Working or Interest Group and should be demonstrably developed and endorsed by the group. Each Output should have the respective Working or Interest Group listed as an author where appropriate.

RDA Outputs are classified as **RDA Recommendations** (official, endorsed results of RDA Groups), **Supporting Outputs** (useful solutions from our RDA Working and Interest Groups) or **other Outputs** - more information can be found at <https://www.rd-alliance.org/recommendations-outputs>. They are all listed below and can be searched according to their focus, scientific domain, or by status using the filters on the right. Filters can be combined, too (if more than one filter is selected, results sum up).

### Search for Recommendations & Outputs



You can also browse the full list by clicking on the "table view" icon below

Number of results: 56



Search by Status

- RDA Endorsed Recommendations
- Recommendations with RDA Endorsement in Process
- RDA Supporting Outputs

Search for Topics

Select All

- Data Management
- Data Collection
- Data Description
- Identity, Store, and Preserve
- Disseminate, Link, and Find
- Policy, Legal Compliance, and Capacity

Primary Domain

Select All

- Social Sciences
- Natural Sciences
- Engineering and Technology
- Medical and Health Sciences
- Agricultural Sciences
- Humanities

Domain Agnostic

- Domain Agnostic

Apply

<https://www.rd-alliance.org/recommendations-and-outputs/catalogue>



# Adoption Stories

- Documented cases of adoption
  - What was the challenge?
  - What Output did you adopt?
  - How did you do this?
  - What were the benefits?
  - What did you learn?



- Check out the [list of adoption stories](#) and the [playlist of adoption videos](#)
- Have you adopted an RDA output? [Tell us](#) about your experience!



# OPPORTUNITY TO GET INVOLVED

## 18th Research Data Alliance Virtual Plenary Meeting

3-18 November 2021



### Upcoming information sessions:

- What to expect when attending an RDA Plenary, 28 Sep 2021, 16:00 to 16:30 UTC  
Register [here](#)
- Navigating all things RDA - Website, Plenaries and more, 26 Oct 2021, 16:00 to 16:30 UTC  
Register [here](#)

### RDA Virtual Plenary Meeting 3-18 November 2021

- 60 breakout sessions focusing on existing RDA group activities and progress (Working and Interest Group meetings, Joint meetings, Communities of Practice) and new ideas for groups (Birds of a Feather (BoF))
- Poster & Networking sessions - Deadline for poster applications - 15 September - <https://www.rd-alliance.org/rdas-18th-plenary-call-posters>

<https://www.rd-alliance.org/plenary-meetings/next-plenary>



## Further Information

For more information, including some videos, check out the *RDA for Newcomers* page:

<https://www.rd-alliance.org/about-rda/rda-newcomers>



# *THANK YOU VERY MUCH!*

**Research Data Alliance (RDA)**

**Email - [enquiries@rd-alliance.org](mailto:enquiries@rd-alliance.org)**

**Web - [www.rd-alliance.org](http://www.rd-alliance.org)**

**Twitter - [@resdatall](https://twitter.com/resdatall)**

**LinkedIn - [www.linkedin.com/in/ResearchDataAlliance](http://www.linkedin.com/in/ResearchDataAlliance)**

**Slideshare -**

**<http://www.slideshare.net/ResearchDataAlliance>**

**Hilary Hanahoe**

**Secretary General, Research Data Alliance**

**Email – [hilary.hanahoe@rda-foundation.org](mailto:hilary.hanahoe@rda-foundation.org)**

**Stefanie Kethers**

**Director of Operations, Research Data Alliance**

**Email – [Stefanie.Kethers@ardc.edu.au](mailto:Stefanie.Kethers@ardc.edu.au)**